



2011 Grant Program Guidelines and Eligibility

The Schuylkill Highlands Grant Program is a reimbursement grant program funded by the PA Department of Conservation and Natural Resources (DCNR) and the William Penn Foundation and administered by the Schuylkill River Heritage Area and Natural Lands Trust.

Who Can Apply

Grants will be made to municipalities, non-profits, watershed associations, and friends groups with a tax exempt 501(c)(3) status. The intent is to advance targeted project work within the eligible boundary that support the goals and vision of the Schuylkill Highlands and specifically the 2010 mini-grant award priorities.

Schuylkill Highlands Mission and Goals

The Schuylkill Highlands is forging a variety of partnerships to preserve, restore and enhance natural, historic, cultural and recreational resources while encouraging sustainable practices and compatible economic development to create healthy and vibrant communities. The four conservation goals include:

1. Connect residents and visitors to the outdoors, and increase awareness, appreciation and use of the scenic, cultural, historic, recreational and natural areas within the Schuylkill Highlands focusing on trail networks, connections and educational opportunities.
2. Support the economic vitality of the Schuylkill Highlands by implementing sustainable planning and practices, and encourage community economic development initiatives that are compatible with the scenic, cultural, historic and recreational resources
3. Protect and steward the natural resources of the Schuylkill Highlands focusing on strategically targeted land and watershed protection area within the landscape. Utilize the unique position of the partnership to create multi-county and multi-agency approaches to issues and problem solving in the Schuylkill Highlands that support the quality of life of residents and conservation of the landscape and its natural resource assets.

Funding Priorities

The Schuylkill Highlands Mini-Grant Program will support two major priorities; Natural Resource- Based Conservation and Nature-Based Tourism.

A. Natural Resource-Based Conservation Projects

Focus

To promote and implement projects that advance conserving and protecting the natural, cultural, historic and recreational resource areas while promoting sustainable development. The proposed project area, because of its location, biological resources, or other features, is capable of being, and likely to be, utilized for; 1) a corridor for migration of wildlife or fish species native to Pennsylvania; 2) preserving scenic values; 3) protecting and enhancing biological or habitat values of a watercourse, wetlands, or other natural resource; 4) protecting a significant geological, cultural, historical or recreational feature; 5) providing educational material, such as signage, maps, or trail guides, about the biological, scenic, geological, or historical features within the project area , and; 6) educational materials or opportunities which would have a positive impact on the area's natural, cultural, and recreational activities.

Grant requests for the priorities above are not to exceed \$10,000. Project examples are provided below.

Project Examples

- Water quality, habitat improvement and restoration projects and implementation of riparian buffer and tracking/monitoring for success
- Open Space municipal plans or conservation ordinances that result in a significant contribution to the protection of important natural resources
- Agricultural and storm water BMP's that result in habitat improvement
- Regional trail alignment, feasibility, mapping and master plans
- Implementation of land/resource stewardship and conservation plans
- Capital Improvement projects for passive recreational activities such as trails, board walks, stream crossings on trails, observation areas
- Educational camps, activities to assist others to learn about natural resources
- Community gardens
- Natural, cultural and historic resource educational forums and materials

Geographic Boundaries

See the attached map for the geographic boundaries for Resource Conservation projects

B. Nature-Based Tourism Projects

Focus

These grants are to be focused on River and Heritage Towns with projects designed to promote and enhance their economic development based on creating, improving, or renovating connections between the Schuylkill River, the Schuylkill River Trail, downtown communities, the Hopewell Big Woods as well as historical and cultural sites. Nature-based Tourism projects should address natural and scenic resources, recreational opportunities, and the integration of river towns with local sites and tourism. Cultural and heritage sites are encouraged to apply if their project focuses on connections between their site and the river or trail; however, projects for the site itself or site improvements will not be considered in this program.

Grant requests for this priority are not to exceed \$20,000. Project examples are provided below.

Project Examples

- Tours, walks, talks and products that advance visitor and resident experiences
- Business development plans
- Main street improvements, facades, green infrastructure
- Recreational Gateway signage and improvements
- Trail connectors from the river to towns or to Big Woods sites
- Trail connectors from historic, cultural and natural sites to trails
- Recreational user amenities such as bike racks, restrooms, etc
- Bike and pedestrian improvements
- Water trail landings
- Development of access points from rivers to towns
- Development of access points for river towns facilities and amenities
- Capital improvements for passive recreation, such a trails, boardwalks, safe pedestrian stream crossings and observation areas for reviewing wildlife and view sheds
- Nature boardwalks and overlooks

Geographic Boundaries

See the attached map for the geographic boundaries for Nature-Based Tourism projects

Terms and Eligibility

- Projects should demonstrate consistency with the goals of the Schuylkill Highlands program.
- Planning and implementation projects are both eligible.

- All planning projects must be completed within 12 months and implementation projects within 24 months. Early implementation projects are encouraged.
- All grants require a 50/50 or 1:1 match with AT LEAST half of the required match being cash. Up to one-half of the required match may be in-kind.
- Eligible applicants may have two open grant awards as long as one is a planning project and one is an implementation project.

Application Timeline

March 4, 2011 - Grant announcement

April 28, 2011 - Application due date

May 17, 2011 - Awards announcement

Application Submission

Applicants are required to submit the Schuylkill Highlands Mini-Grant Application electronically in Word or PDF format by 4:00 PM April 28, 2011 to:

Tim Fenchel
Schuylkill River Heritage Area
140 College Drive
Pottstown, PA 19464
tfenchel@schuylkillriver.org
484-945-0200
484-945-0204 (fax)

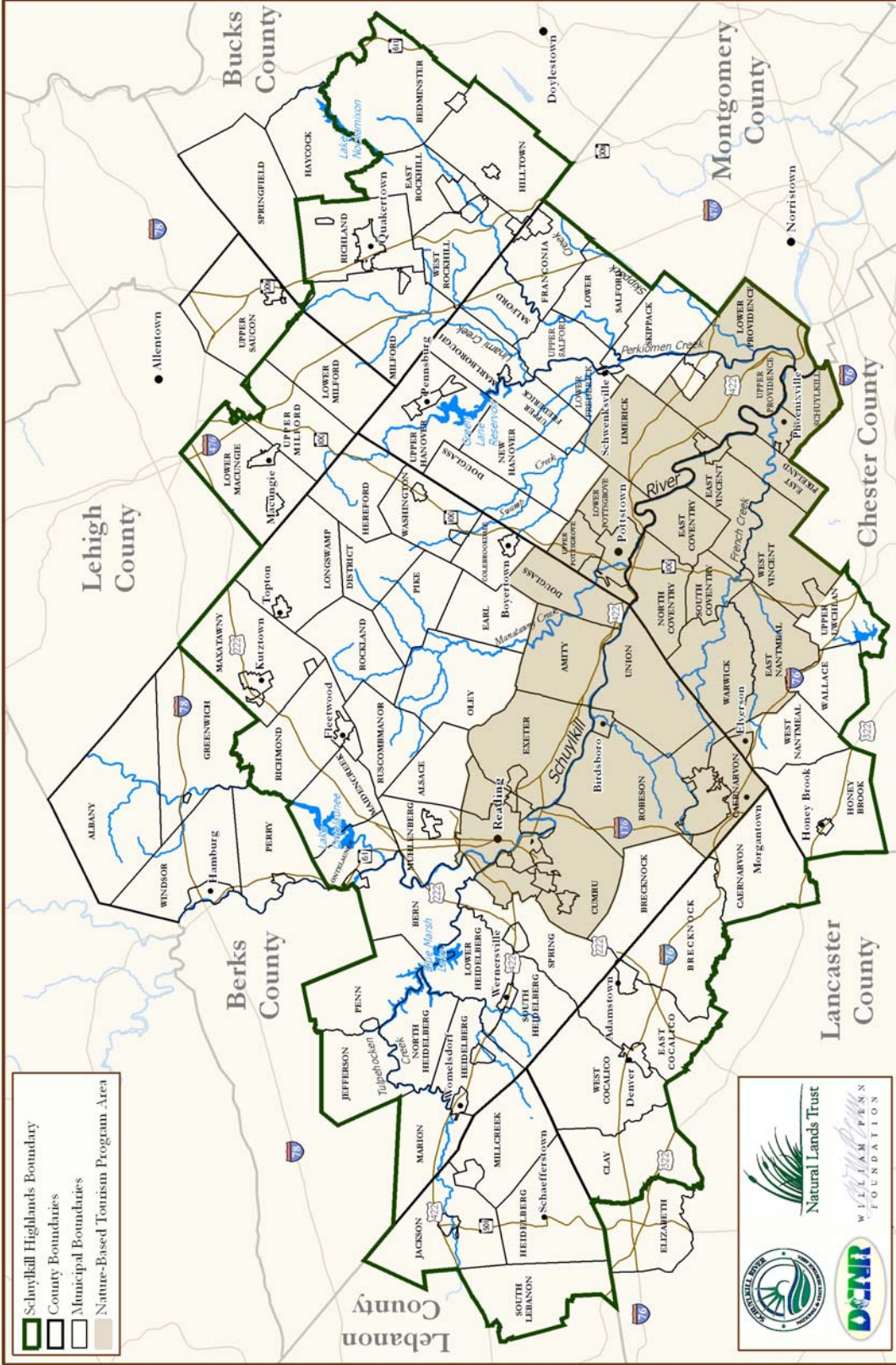
Selection Criteria

The grant applications will be reviewed by a committee of representatives from the funding and administering agencies as well as members of the local community. Their review will take into account the total amount of funds available at each of two award periods. A proposed project **must satisfy** the following criteria.

- Project must fall inside the stated geographical boundaries.
- Project is consistent with Local, County, and/or State plans, such as open space, land use, greenway, rivers conservation and recreation plans.
- Project furthers the mission and goals of the Schuylkill Highlands.
- Project sponsor has the capacity to conduct and implement the project.
- Matching funds are secured for the project.
- Project can commence in a timely manner and be successfully completed within 24 months.

Reimbursement Process & Documentation

- Cooperative agreements will be executed prior to project start up for all successful applicants. (Applicants will be required to provide proof of ownership or long term lease for certain projects.)
- Grantee must submit bi-annual project reports, as well as all required closeout documentation. Early action projects with shorter (6 month) completion periods will not have reporting requirements until project closeout. Ten percent (10 %) of the grant award will be withheld until all final closure documentation is submitted and approved. Grantees must submit invoices showing 100% of project cost expenditures including expenditure of both the grant and the required match. Grantee must also submit a Final Report addressing project details and deliverables including photographs, maps, studies or project documents. When approved, the remaining 10% reimbursement for agreed awards will be made.
- Grantee will acknowledge the funding assistance provided through this program in all reports and printed materials produced using grant funds. Some products may require inclusion of the Schuylkill Highlands logo prior to distribution and permission to include in a Schuylkill Highlands Project Fact Sheet.
- Implementation projects will acknowledge assistance on a permanent sign constructed on the project site in a location that is visible and accessible to the public. A funding statement and appropriate graphics and logos will be provided to the grantee.
- All applicants must adhere to DCNR Community Conservation Partnership Program requirements. A copy of these requirements is available at:
<http://dcnr.state.pa.us/grants/>



- Schuylkill Highlands Boundary
- County Boundaries
- Municipal Boundaries
- Nature-Based Tourism Program Area



Schuylkill Highlands Mini-Grant Program

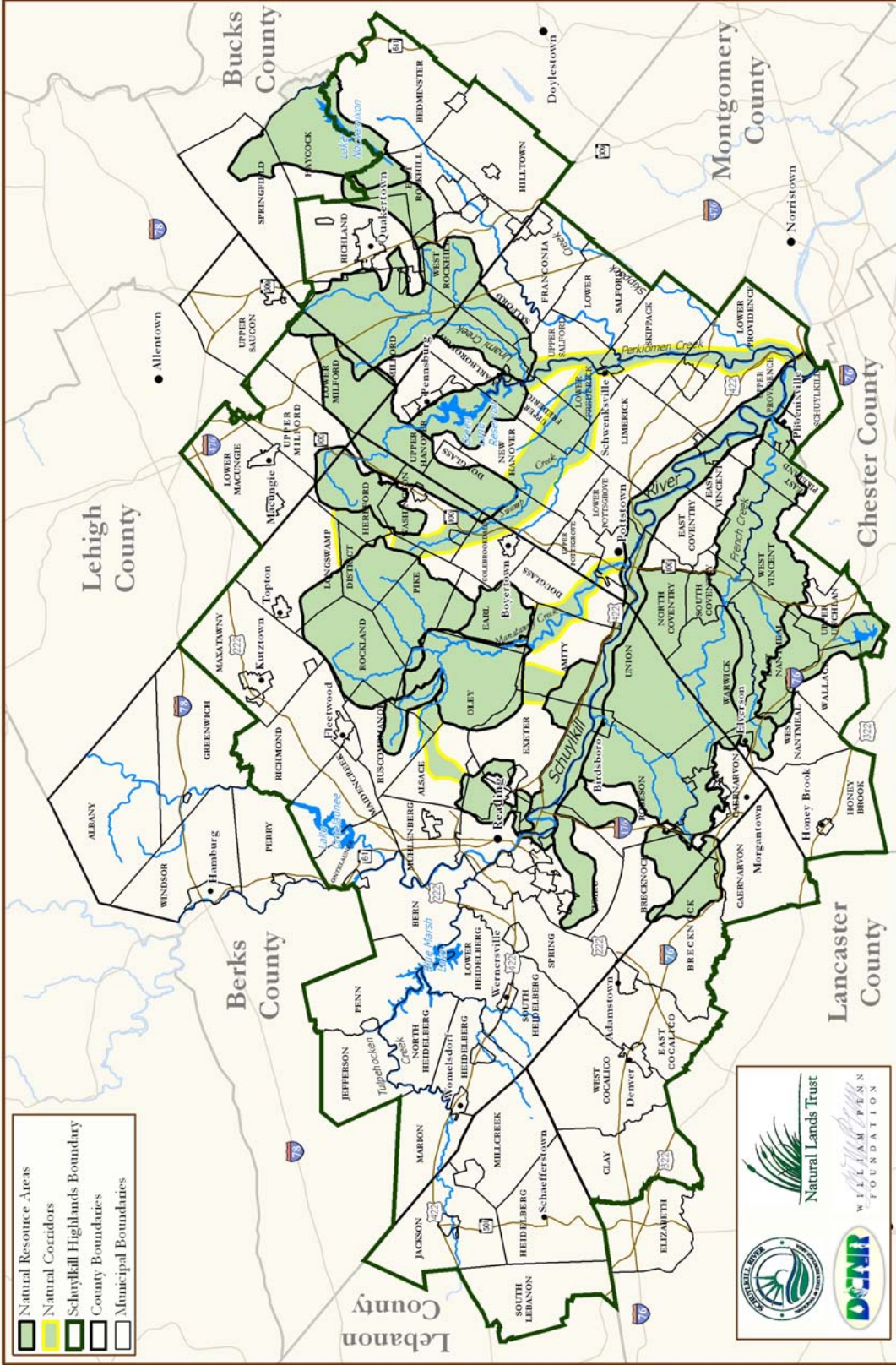
Nature-Based Tourism

Project Eligibility Boundary

Berks, Bucks, Lehigh, Lancaster, Lebanon, Montgomery, and Chester Counties, Pennsylvania



Copyright 2024 01/02/21



Copyright 2014 02/28/14

Schuylkill Highlands Mini-Grant Program
 Natural Resource-Based Conservation

Project Eligibility Boundary

Berks, Bucks, Lehigh, Lancaster, Lebanon, Montgomery, and Chester Counties, Pennsylvania





2011 Mini- Grant Program Application

APPLICATION INFORMATION		
Organization		
Address		
Address		
City	State	Zip
Phone	Fax	Web
Municipality		County
Contact Name		
Title		
Email		

PROJECT INFORMATION		
Project Type Based Tourism	<input type="checkbox"/> Natural Resource-Based Conservation	<input type="checkbox"/> Nature-
Project Title		
Project Location		
Project Description Short description of the project approximately 50 words		

PROJECT SCOPE
2 page maximum
<p>Please attach to this application the detailed project scope addressing the complete project scope, deliverables, timeline and all other information about the project. Please include how this project will address the mission and four goals of the Schuylkill Highlands as well as how it relates to other local and regional initiatives.</p> <p>➤ In addition to your narrative please attach a project site map showing the location of the project within the</p>

Schuylkill Highlands boundaries.

BUDGET INFORMATION

Grant Request	\$
Required Local Match to CLI funds (1:1 Match)	\$
a. Cash Match – at least 25% (public or private)	\$
b. In-Kind contributions	\$
Projected Total Project Cost NOTE: If the total project cost exceeds the CLI grant funds requested plus the match, please detail other costs and how they will be funded	\$

- Applicants may attach a one page full project budget to this application

MATCH SOURCES

Source	Amount	Committed or Pending
	\$	
	\$	
	\$	
	\$	

PARTNERSHIPS

Please list all partners related to this project

✦ **IMPORTANT NOTE** ✦ All projects and project related cost and expenses must conform to the guidelines and limitations outlined in the PA DCNR Community Conservation Partnership Program found at: <http://dcnr.state.pa.us/brc/grants/>

SIGNATURES

Name (print)	Title	Signature
Date		

